

Bohrschrauber
–
driver drill

Brenn-, Heiz-, Hochofen
–
furnace

Durchmesser
–
diameter

elektrische Spannung
–
voltage

Fingerabdruck
–
fingerprint

Führungsarm
–
overarm

Führungsloch
–
pilot hole

Gleichstrom
–
direct current
(DC)

Halteklammer,
Halterung
–
retaining bracket

Handschuhe
–
gloves

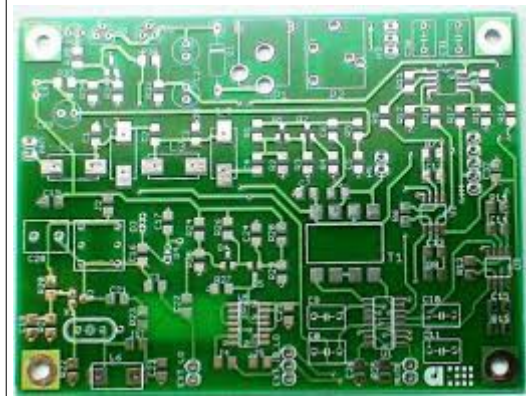
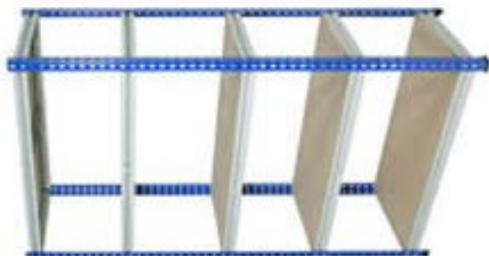
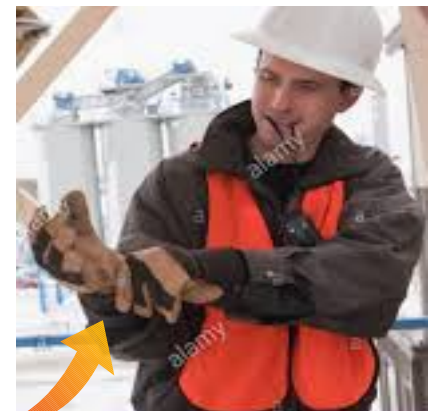
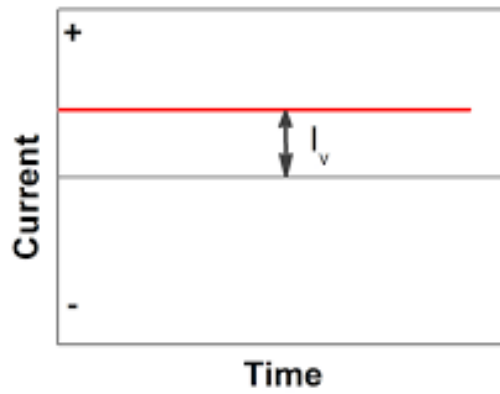
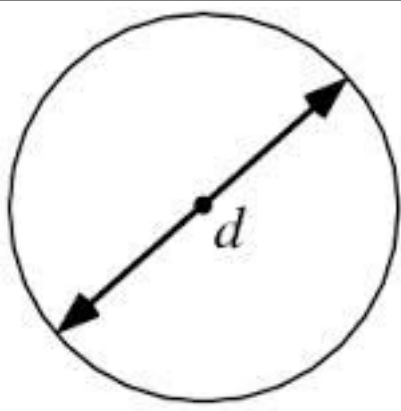
Hochspannungsmast,
Pylon
–
pylon

Leichtbohrmaschine
–
light-duty drill

Leiterplatte
–
printed circuit board
(PCB)

Löten
–
soldering

Regal
–
rack



Regenrinne
–
gutter

Reitstock
–
tailstock

Schalter, Switch
–
switch

Schleifscheibe
–
grinding disc

Schubladen
–
drawer

Schweißen
–
welding

Sicherung
–
fuse

Stechuhr
–
punch clock

Steckgehäuse
–
rack

Tiefenmesser,
- anschlag
–
depth gauge

Ventil
–
valve

Wechselstrom
–
alternating current
(AC)

Widerstand
–
resistor

Zangen
–
pliers

Zylinderspule
–
solenoid

